



**ANTE METER CO., LTD**

## **DATA SHEET**

**TYPE : DDS994**

**SINGLE – PHASE, 3 – WIRE  
240V 10(100)A 60Hz**

- **TECHNICAL DATA**
- **CONSTRUCTION**
- **DIMENSION**
- **CONNECTION DIAGRAM**
- **CHARACTERISTIC CURVES**
- **NAMEPLATE**
- **METER PICTURE**



# ANTE METER CO., LTD

## Technical Data

Type : DDS994 (1P3W)

Item	Unit	Data
Accuracy		1.0
Applicable Standard		IEC61036
Connection		DIN
Rated Voltage	(V)	240
Basic Current $I_b$ (Rated Maximum Current $I_{max}$ )	(A)	10 (100)
Rated Frequency	(Hz)	60
Meter Constant	(imp/kWh)	800
Register		200 : 1, 5 integers + 1 decimal
Voltage Circuit Consumption	(W)	$\leq 1.2W$ , 6VA
Current Circuit Consumption	(VA)	$\leq 1$
Mean Temperature Coefficient i) From 0.1 <b>I<sub>b</sub> to <i>I<sub>max</sub></i> at unity PF ii) From 0.2<b>I<sub>b</sub> to <i>I<sub>max</sub></i> at 0.5lagging</b></b>	$^{\circ}C$ $^{\circ}C$	0.05 0.07
Creeping Voltage		80%~110% <i>U<sub>n</sub></i>
Starting Current		4% <i>I<sub>b</sub></i>
Limit of Errors i) 0.05 <b>I<sub>b</sub> at Unity PF ii) from 0.1<b>I<sub>b</sub> to <i>I<sub>max</sub></i> at unity PF iii) 0.1<b>I<sub>b</sub> 0.5 lagging iv) from 0.2<b>I<sub>b</sub> to <i>I<sub>max</sub></i> 0.5 lagging v) 0.1<b>I<sub>b</sub> 0.8leading vi) from 0.2<b>I<sub>b</sub> to <i>I<sub>max</sub></i> 0.8leading</b></b></b></b></b></b>	(%) (%) (%) (%) (%) (%)	$\pm 1.5$ $\pm 1.0$ $\pm 1.5$ $\pm 1.0$ $\pm 1.5$ $\pm 1.0$
Insulation resistance Mega ohms at 500V DC	(M $\Omega$ )	>50
Power frequency withstand voltage for 1 min	(kv)	2
Impulse withstand voltage (peak)	(kv)	6
Reverse indicator		No
No Load Indicator		No
Weight	(kg)	0.75



# ANTE METER CO., LTD

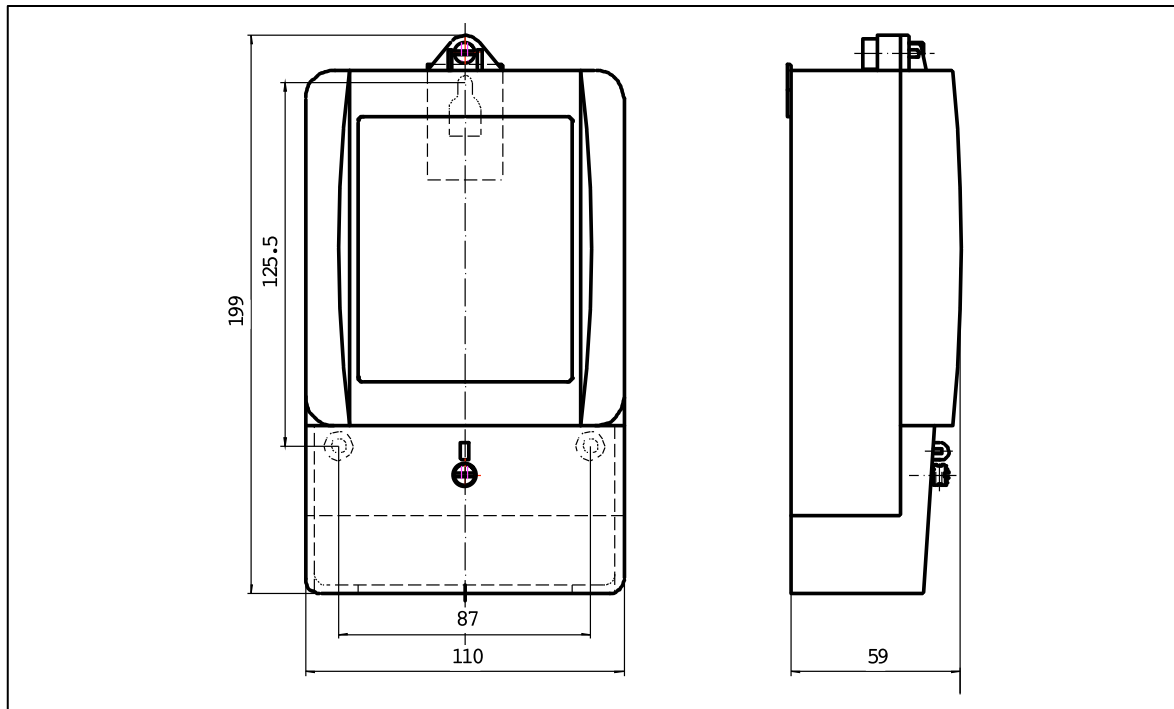
## Construction

Type : DDS994 (1P3W)

Item	Name of Parts	Specification
1	Base	Grey ABS anti-flaming
2	Cover	Grey ABS anti-flaming ( Transparent glass window)
3	Terminal Cover	Long (Transparent AS)
4	Terminal Block	Bakelite
5	Shunt	120 $\mu\Omega$ manganese & copper, 2pcs
6	Register	With 3mm shield cover. Anti-magnetic, using life more than 10 <sup>9</sup> times; Step motor
7	Main Measuring Chip	ADE7755,American ADI , Active Measuring chip, variation $\leq\pm 0.1$ jump $\leq\pm 0.1$ ,
8	CPU	PIC12F508 American Microchip
9	Electrolytic Capacitor	Japan Rubycon, YXA,105°C, long life, low creepage.
10	Capacitor for Lowering Voltage	CBB, metalized Polypropylene membrane capacitor, special use for meters, long term stability for working capacitor value, 0.82 $\mu\text{F}$ -400VDC, with error of 0~10%.
11	Voltage Dependent Resistor	MYG3 20K420 Xi'an Wireless No.2 Plant, Max. Current Capacity 1st 6500A,2 <sup>nd</sup> 4500A
12	Patch Resistor	100PPM, the resistance error within the range of $\pm 1\%$ .1/8W, operation temperature range -55~125°C
13	Current Limiting Resistor	Wire-rolling resistance 470 $\Omega$ /3W, withstand voltage at 500V,operation temperature range -55~125°C
14	Patch Capacitor	K grade, small capacity is J grade, (Japan TDK) , withstand voltage at 50V
15	Crystal Oscillator	3.579545MHz, semi-stereo,20PPM, oscillating in wide temperature range (Taiwan Hongxing)
16	Rectifier Diode	1N4007, reverse withstand voltage >1000VDC, current capacity 1A
17	Photo-electronic Coupler	P2501K, 100% of transferring efficiency. separated voltage>7.5KV,Vceo $\geq$ 50V, leading current>5mA
18	Three Port Voltage Regular	78L05, 1W, $\pm 3\%$ voltage error, NEC with the protection of over-current and over-voltage
19	Connection Copper Plate	11 $\times$ 13mm, $\phi$ 8.5mm

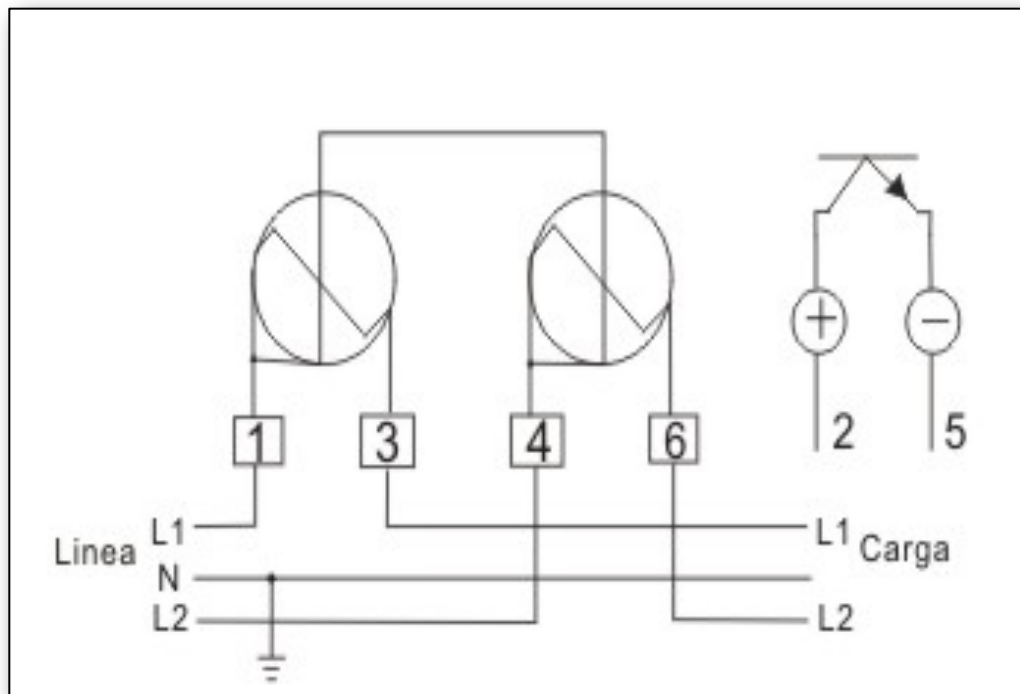
## Dimension

Type : DDS994 (1P3W)



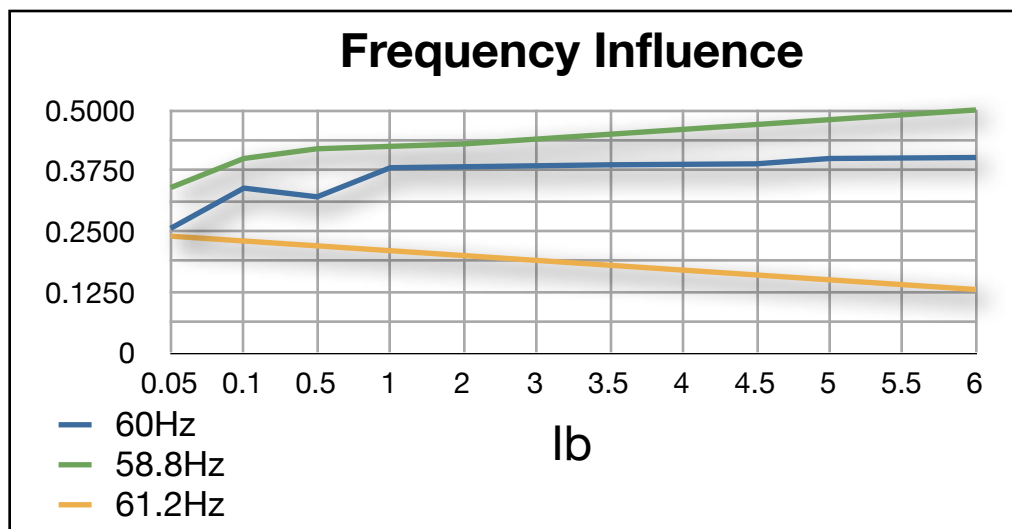
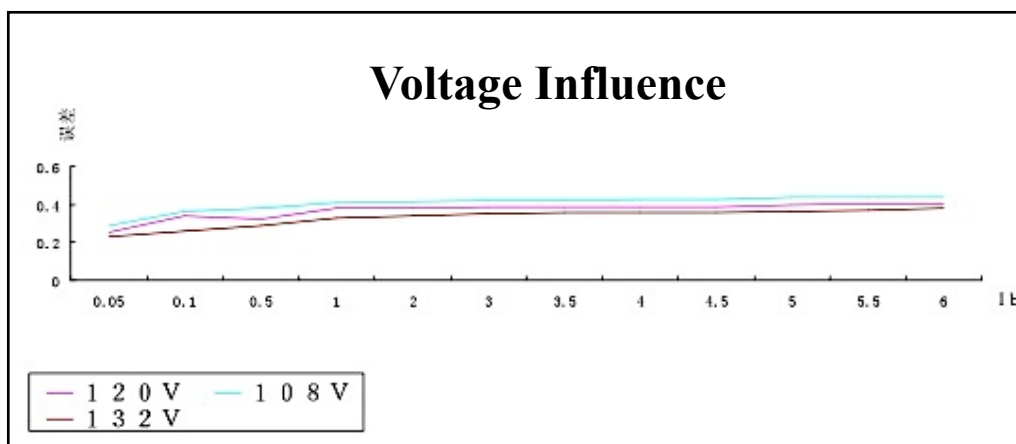
## Connection Diagram

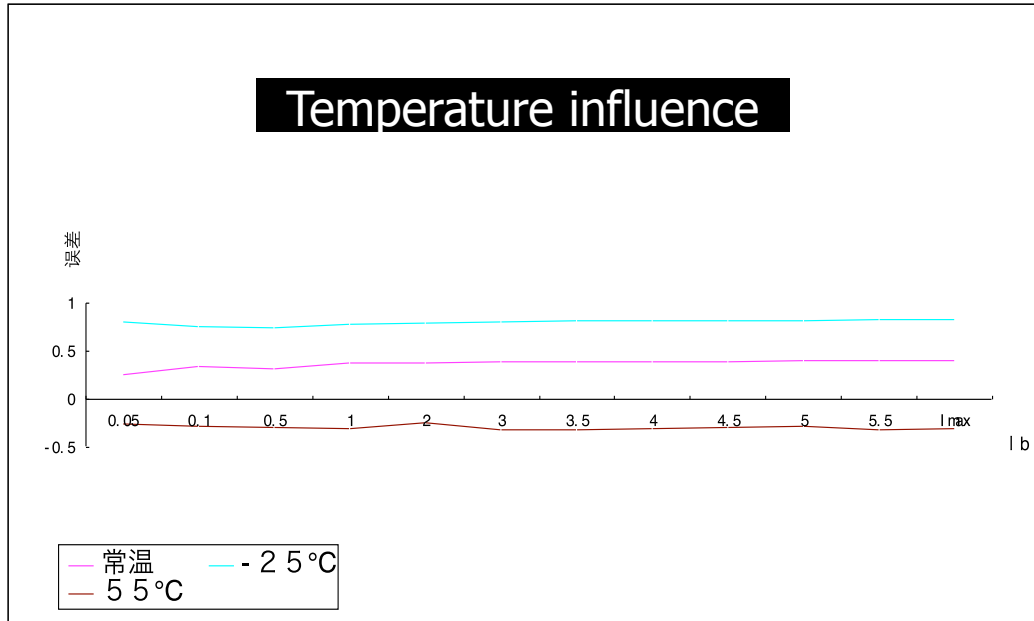
Type : DDS994 (1P3W)



## Characteristic Curve

Type : DDS994







ANTE METER CO., LTD

## Nameplate

Type : DDS994 (1P3W)



**Tecun**

Cra 31 # 35-12 P.7  
Bucaramanga - Colombia  
+57 (7) 634-3414  
[www.tecun.com](http://www.tecun.com)

**Ante**





ANTE METER CO., LTD

## Meter Picture

Type : DDS994 (1P3W)



**Tecun**

Cra 31 # 35-12 P.7  
Bucaramanga - Colombia  
+57 (7) 634-3414  
[www.tecun.com](http://www.tecun.com)

**Ante**